



netis Wired PCI(PCI-E) Adapter Quick Installation Guide



I. Check Your Package Contents

The following items should be found in your package:

- > Wired PCI(PCI-E) adapter
- > Quick Installation Guide
- > CD-ROM

Make sure that the package contains above items. If any of the above items is missing or damaged, please contact the store you bought this product from.

2.Before Your Begin

Minimum Requirements:

- > Available PCI (PCI-E) slot
- > 300 MHZ processor and 32 MB of memory
- > CD ROM drive
- > A device which can connection to a network, such as a router or a switch
- > Microsoft® Windows®7, Vista®, XP, 2000 Sp4

3.Insert the CD

Turn on the computer and insert the included CD in the CD-ROM drive. The install screen will appear. If not, click the Start button and choose Run and enter D:\CDView.exe (if 'D' is your CD-ROM drive)

- > Select 'Install Driver' and follow the software instructions.
- > Choose the suitable driver for your adapter in the drop-down menu.



Attention:The produce of AD-1103 is only a example

Figure 3-1

The following is the step-by-step instructions in Windows XP. The steps and screens are similar for the other Windows operating systems.

> Preparing for setup

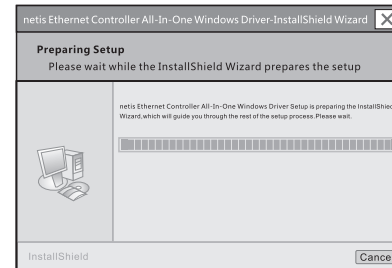


Figure 3-2

> Click "Next >"



Figure 3-3

> Click "Install"

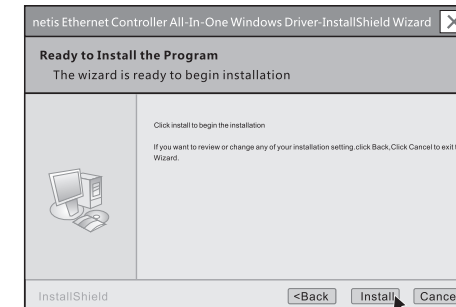


Figure 3-4

> Installing

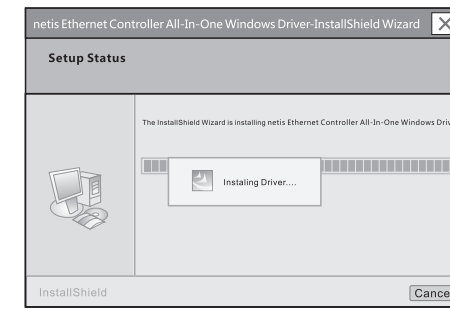


Figure 3-5

After few minutes, It will show the info as the following figure, mean the drivers has been installed.

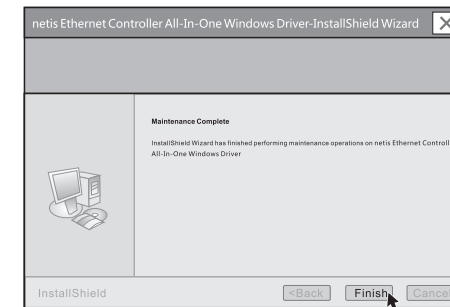


Figure 3-6

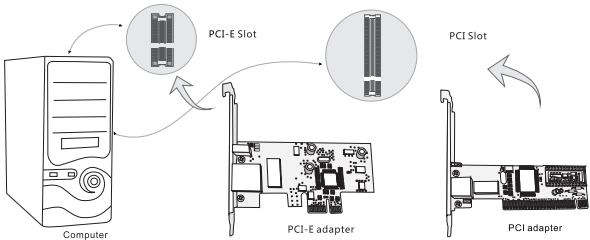
4. Hardware Installation

PCI(PCI-E) Adapter

Power off your computer and insert the adapter into the slot of PCI(PCI-E).

!Attention: Hardware warning:

- 1.Place the device a ventilated place which far away from heat.
- 2.Do not be watered while storage, transportation and running.
- 3.Protect devices from the damage of stuff like acid or alkali and so on.
- 4.Do not dismantle the device yourself.



5. Connecting To Your Network

Now the installation is complete. You can connect the adapter to your network device such as switch by a cable, The Link LED should light up to indicate a proper physical connection between the adapter and the network.

6. Configuring The Network Parameters

> Click "My Network Places" with the right button of your mouse. Then select "Properties" .

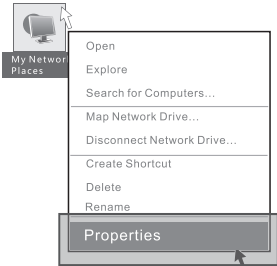


Figure 5-1

> Click "Local Area Connection" with the right button of your mouse. Then select "Properties".



Figure 5-2

> Double click the "Internet Protocol(TCP/IP)".

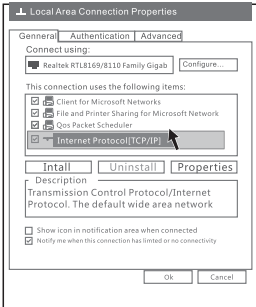


Figure 5-3

> Select the "Obtain an IP address automatically" as bellow, and click the button of "ok" , then, your pc could get the parameters from the DHCP server which is in your network.

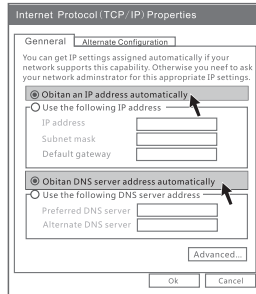


Figure 5-4

FCC Statement

This equipment has been tested and found to comply with the limits for a Class B digital device, pursuant to part 15 of the FCC rules. These limits are designed to provide reasonable protection against harmful interference in a residential installation. This equipment generates, uses and can radiate radio frequency energy and, if not installed and used in accordance with the instructions, may cause harmful interference to radio communications. However, there is no guarantee that interference will not occur in a particular installation. If this equipment does cause harmful interference to radio or television reception, which can be determined by turning the equipment off and on, the user is encouraged to try to correct the interference by one or more of the following measures:

- Reorient or relocate the receiving antenna.
 - Increase the separation between the equipment and receiver.
 - Connect the equipment into an outlet on a circuit different from that to which the receiver is connected.
 - Consult the dealer or an experienced radio/TV technician for help.
- To assure continued compliance, any changes or modifications not expressly approved by the party responsible for compliance could void the user's authority to operate this equipment. (Example-use only shielded interface cables when connecting to computer or peripheral devices).

This equipment complies with Part 15 of FCC RF Rules. Operation is subject to the following two conditions:

- 1) This device may not cause interference and
- 2) This device must accept any interference, including interference that may cause undesired operation of the device.

USA/Canada Technical Support:

Phone (toll free in USA & Canada):

1-866-71-network or 1-866-716-3896

Email: usa_support@netis-systems.com

for North America only

netis SYSTEMS CO.,LTD.
[Http://www.netis-systems.com](http://www.netis-systems.com)
MADE IN CHINA